

# Gasoline Engine Driven Self-Priming Centrifugal Pumps

**MODEL**

## 2AUW, 3AUW

Portable Contractor Pumps

### APPLICATIONS

Home, farm and cottage water systems and booster service.

### PUMP SPECIFICATIONS

#### 2AUW (2" Connections):

- Length: 20.50"
- Width: 15.00"
- Height: 15.75"
- Weight: 45 lbs.
- Solids: 1/2" Dia.

#### 3AUW (3" Connections):

- Length: 20.75"
- Width: 15.50"
- Height: 17.25"
- Weight: 52 lbs.
- Solids: 1/2" Dia.

### ENGINE SPECIFICATIONS

#### 2AUW (2" Connections):

- Horsepower: 3.5 HP
- Displacement: 148 cc
- Fuel capacity: 2 qt.
- Oil capacity: 20 oz.
- Air cleaner: Paper
- Ignition: Electronic
- Governor: Pneumatic

#### 3AUW (3" Connections):

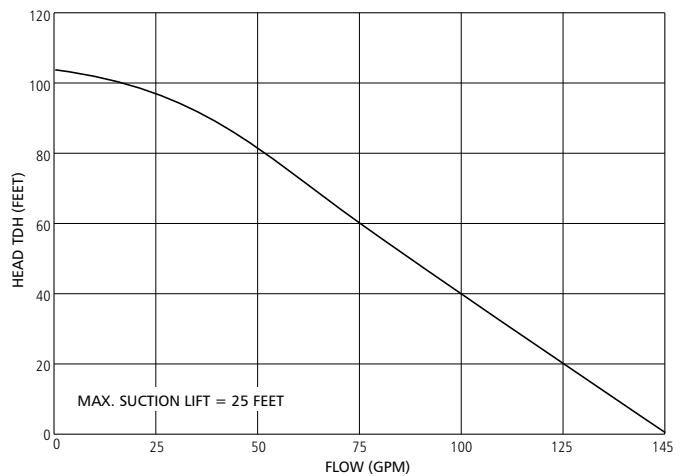
- Horsepower: 5.5 HP
- Displacement: 206 cc
- Fuel capacity: 4 qt.
- Oil capacity: 20 oz.
- Air cleaner: Paper
- Ignition: Electronic
- Governor: Mechanical

### FEATURES

- Lightweight, portable and compact design.
- Die cast aluminum casing, engine housing and volute.
- Durable cast iron impeller.
- Reliable Briggs and Stratton engines.
  - 3.5 HP "standard"
  - 5.5 HP Intek™ Pro
- Trouble free mechanical seal, carbon/ceramic/BUNA-N.
- Fabricated carry handle base, rugged and convenient.
- Multi-position discharge connection.
- Injection molded suction strainers.
- Fittings supplied to accommodate NPT connections.
- Available in 2 sizes:
  - 2" NPT Connections, 3.5 HP
  - 3" NPT Connections, 5.0 HP.

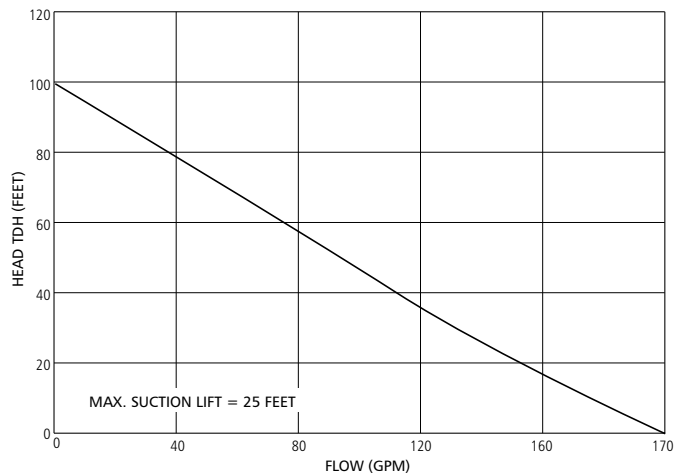
### 2AUW PERFORMANCE

Flow (GPM)	0	25	50	75	100	125	145
TDH (Ft.)	105	96	80	60	40	20	0



### 3AUW PERFORMANCE

Flow (GPM)	0	40	80	120	160	170
TDH (Ft.)	100	78	57	35	14	0



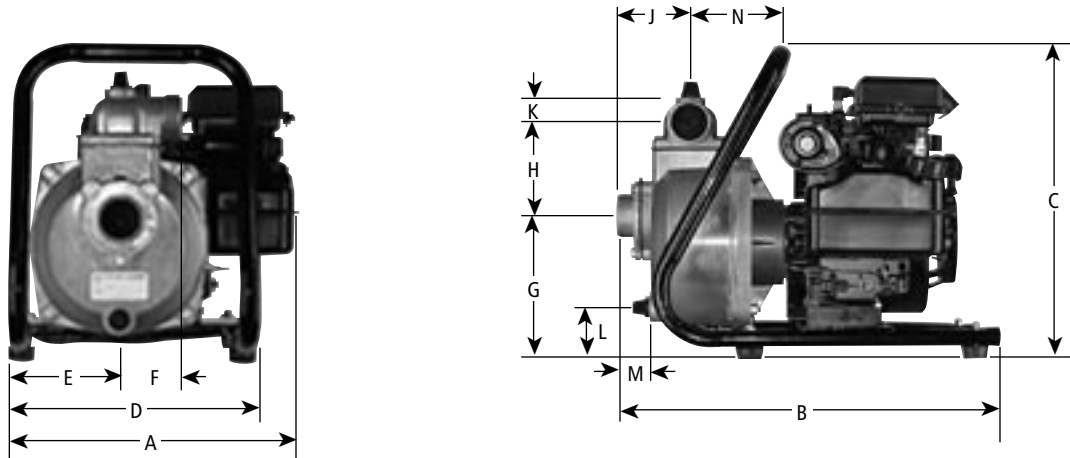
# Gasoline Engine Driven Self-Priming Centrifugal Pumps

**MODEL**

## 2AUW, 3AUW

Portable Contractor Pumps

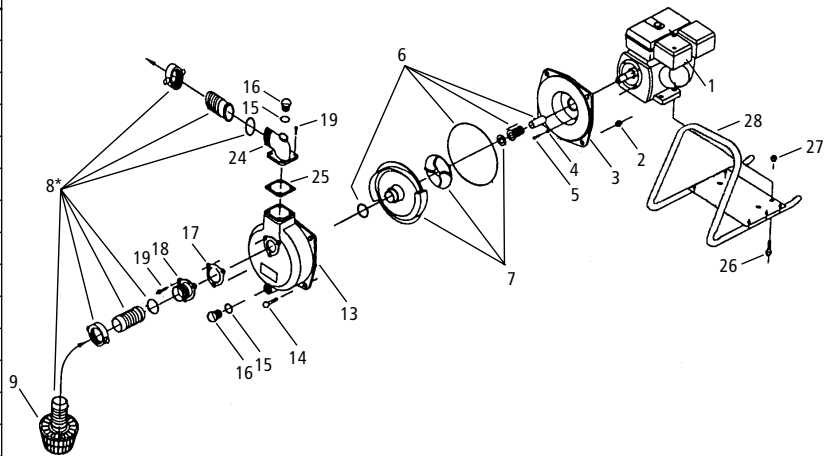
### DIMENSIONS AND WEIGHTS



Model	Dimension (in inches)													Wt. (lbs.)
	A	B	C	D	E	F	G	H	J	K	L	M	N	
2AU	14 <sup>3</sup> / <sub>4</sub>	19 <sup>1</sup> / <sub>2</sub>	18 <sup>3</sup> / <sub>4</sub>	12 <sup>1</sup> / <sub>4</sub>	5 <sup>1</sup> / <sub>4</sub>	2 <sup>3</sup> / <sub>4</sub>	7	5 <sup>1</sup> / <sub>4</sub>	3 <sup>3</sup> / <sub>4</sub>	1 <sup>1</sup> / <sub>2</sub>	2 <sup>1</sup> / <sub>4</sub>	2	8	45
3AU	16 <sup>1</sup> / <sub>4</sub>	20 <sup>3</sup> / <sub>4</sub>	18 <sup>3</sup> / <sub>4</sub>	12 <sup>1</sup> / <sub>4</sub>	4 <sup>1</sup> / <sub>2</sub>	4 <sup>1</sup> / <sub>2</sub>	7 <sup>3</sup> / <sub>4</sub>	7 <sup>1</sup> / <sub>4</sub>	4 <sup>3</sup> / <sub>4</sub>	2	2 <sup>1</sup> / <sub>2</sub>	2 <sup>1</sup> / <sub>4</sub>	8 <sup>1</sup> / <sub>4</sub>	52

### COMPONENTS LIST

Item No.	Part Description	Item No.	Part Description
1	Engine – 3½ HP	9	Suction strainer
	Engine – 5½ HP	13	Pump housing
2	Locknut – 3/8" – 16	14	Bolt – 3/8" – 16" x 1½"
3	Engine adapter	15	O-ring, drain/filler plug
4	Aluminum washer – 5/16"	16	Drain/fill plug
5	Bolt – 5/16" – 24" x 3/4"	17	Flapper valve
6	Seal assembly	18	Suction flange BSP*
	Shaft sleeve		Suction flange NPT
	O-ring housing	19	Bolt – 5/16" – 18" x 7/8"
	O-ring volute		24
7	Impeller	25	Discharge elbow NPT
	Volute		26
	Imp. shim: 010, 020, 030	27	Bolt – 5/16" – 18" x 1½"
8*	Hose mounting gasket	27	Lock nut – 5/16" – 18
	Hose mounting nipple	28	Cradle assembly
	Hose mounting nut	*Supplied with 2AU, built before September 2005.	
	Suction strainer		



Goolds Pumps is a brand of ITT Water Technology, Inc. – a subsidiary of ITT Industries, Inc.

Goolds Pumps and the ITT Engineered Blocks Symbol are registered trademarks and tradenames of ITT Industries.

PRINTED IN U.S.A.

Intek Pro is a trademark of Briggs and Stratton.

www.goolds.com

SPECIFICATIONS ARE SUBJECT TO CHANGE WITHOUT NOTICE.

Goolds Pumps

