

## 60A – 100A Fusible disconnect switches UL fuse class J, T

For a complete assembly,  
please select one of each:

- 1 switch
- 1 handle
- 1 shaft
- 1 terminal lug kit



OS60J12



OXP6X210



OHB65J6

### 60 – 100 Amp switches, 600V

UL general purpose amp rating	UL Fuse type 600V	Maximum horsepower rating					Catalog number	List price
		Three phase						
		200V	208V	240V	480V	600V		
<b>3 pole</b>								
60	J	15	15	15	30	50	<b>3 pole</b> OS60J12	<b>\$ 380</b>
100	J	25	25	30	60	75	OS100J03	<b>520</b>
<b>4 pole</b>								
60	J	15	15	15	30	50	<b>4 pole</b> OS60J22	<b>490</b>
100	J	25	25	30	60	75	OS100J04	<b>660</b>

### Pistol handles — □ .24 x .24" (□ 6 x 6mm)

UL/NEMA type	IEC type	Color	Length in/mm	Marking	De-featable	Pad-lockable	Weight (lbs.)	Catalog number	List price
1,3R,12	IP65	Black	2.6/65	O/I & Off/On	Yes	Yes	0.29	OHB65J6	<b>\$ 80</b>
1,3R,12	IP65	Red/Yel	2.6/65	O/I & Off/On	Yes	Yes	0.29	OHY65J6	<b>80</b>
1,3R,12	IP65	Black	3.1/80	O/I & Off/On	Yes	Yes	0.30	OHB80J6	<b>90</b>
1,3R,12	IP65	Red/Yel	3.1/80	O/I & Off/On	Yes	Yes	0.30	OHY80J6	<b>90</b>
1,3R,4,4X,12	IP65	Black	3.1/80	O/I & Off/On	Yes	Yes	0.30	OHB80L6	<b>130</b>
1,3R,4,4X,12	IP65	Red/Yel	3.1/80	O/I & Off/On	Yes	Yes	0.30	OHY80L6	<b>130</b>

### Shafts — □ .24 x .24" (□ 6 x 6mm)

Shaft length (inches/mm)	Mounting depth (inches)	Weight (lbs.)	Catalog number	List price
5.9/150	5.5 – 8.5	0.09	OXP6X150	<b>\$ 12</b>
8.3/210	8.0 – 11.0	0.13	OXP6X210	<b>16</b>
11.4/290	11.0 – 14.0	0.18	OXP6X290	<b>20</b>
14.2/360	13.8 – 16.8	0.23	OXP6X360	<b>24</b>
16.9/430	16.5 – 19.7	0.27	OXP6X430	<b>28</b>

### Twisted shafts — Rotates handle 45° □ .24 x .24" (□ 6 x 6mm)

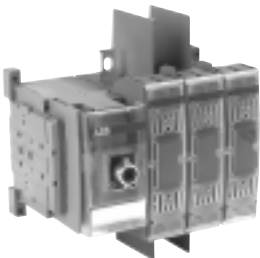
Shaft length (inches/mm)	Mounting depth (inches)	Weight (lbs.)	Catalog number	List price
5.1/130	4.8 – 7.8	0.08	OXP6X130-45	<b>\$ 12</b>
8.3/210	8.0 – 11.0	0.13	OXP6X210-45	<b>16</b>
11.4/290	11.0 – 14.0	0.18	OXP6X290-45	<b>20</b>
14.2/360	13.8 – 16.8	0.23	OXP6X360-45	<b>24</b>

### Direct mount handle — mounts directly to switch, no shaft necessary

UL/NEMA type	Color	Marking	Length mm	Padlockable	Weight (lbs.)	Catalog number	List price
1	Black	O/I/Test	50	Yes	0.10	OHB4	<b>\$ 60</b>



OS60J12



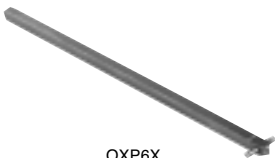
OS100J03



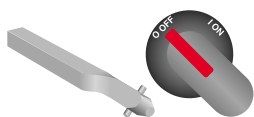
OHB\_\_J6



OHY\_\_J6



OXP6X\_\_



OXP6X\_\_-45