



60 Hz

Hydro-Pro™ Water System Deep Well

MODEL**J05X, J05K, J05L**

APPLICATIONS

Home, farm and cottage water systems and booster service.

PUMP SPECIFICATIONS

Pump:

- Pipe connections:
 - 1" NPT pressure
 - 1¼" NPT suction
 - 1" NPT discharge.
- Pressure switch: AS3FX preset (20-40 PSI).

Motor:

- NEMA service factor.
- 60 Hz.
- ½ HP, 115/230 V capacitor start.
- 3500 RPM.
- Built-in overload with automatic reset.
- Stainless steel shaft.

PUMP FEATURES

- **Serviceable:**
 - Back pullout design allows disassembly of pump for service without disturbing piping.
 - Two compartment motor for easy access to motor wiring and replaceable components.
 - Corrosion resistant, engineered plastic tubing and fittings.
- **Powered for Continuous Operation:** Pump ratings are within the motor manufacturer's recommended working limits. Can be operated continuously without damage.
- **Corrosion Resistant:** Electro-coated paint process is applied inside and out, then baked on.
- **Excellent Air Handling Ability:** After initial priming the pump has the ability to re-prime itself even when air gets into the system. Pumping resumes once the water level rises above the foot valve.

TANK FEATURES

- **Deep Drawn Steel Shells:** Provide maximum material strength.
- **Inner Shell:** Prevents diaphragm from over-expanding.
- **Heavy Duty Diaphragm:** Made of finest quality butyl rubber. Separates air and water, maintains air charge.
- **Interior Tank Lining:** Fusion bonded polymeric lining (durable polypropylene liner used on V15P). Both meet FDA requirements.
- **Maximum Working Pressure:** 100 PSI for V45MP and V60MP, 125 PSI for V15P.

- **Pre-Charged:** 18 PSI.
 - **Temperature Rating:** Maximum 140∞ F.
 - **Appliance Appearance Exterior Finish:** Two coat high performance protection system.
 - **Heavy Duty Base:** Eliminates corrosion due to condensation and exposure to the elements. Made of high density polypropylene.
- NOTE:** The J05X, J05K and J05L require a deep well jet assembly package that must be ordered SEPARATELY.
- See performance rating chart for jet assembly package order number.

Goulds Pumps is ISO 9001 Registered.

60 Hz
Hydro-Pro™ Water System Deep Well

MODEL

J05X, J05K, J05L

ORDER INFORMATION

Model No.	HP	Replacement Pump Model No.	Tank Model	Drawdown at	
				20/40 PSI	30/50 PSI
J05X	½	J5	V15P	1.7	1.4
J05K	½	J05LT	V45MP	5.1	4.3
J05L	½	J05LT	V60MP	7.3	6.1

PERFORMANCE RATINGS

Twin Pipe Systems

HP/Model	½ HP-J5 / J05LT				
Jet Assembly Package (1)	FT3-09	FT4-13	FT4-31	FT4-08	FT5-14
Well Casing Min. I.D. (in.)	3	4			4½
Pressure Pipe Size (in.)	¾	1			1¼
Suction	1	1¼			1½
Jet Body (only)	AT3	AT4			AT5
Nozzle	AN015	AN017	AN016	AN015	AN018
Venturi	AD722	AD726	AD723	AD720	AD724
Control Valve Setting (PSI)	20				
	Feet	Gallons Per Minute (GPM) 20-40 Pressure Switch Setting			
Depth to Jet Assembly (Based on Submergence of 5')	30	7.5	13.7	11.6	
	40		12.4	9.5	
	50			8.0	7.3
	60			7.4	6.7
	70				4.9 5.9
	80				4.0 5.0
	90				3.3 4.3

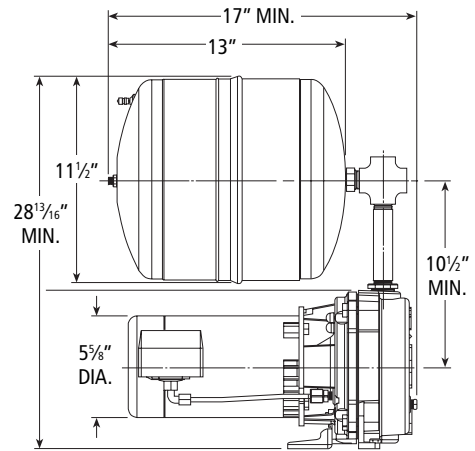
(1) Jet Assembly Package includes: Jet Body, Venturi, Nozzle, Foot Valve

Important Note: Suction and pressure pipe must be sized per the chart above. Use of pipe smaller than recommended will adversely affect performance and may also cause priming problems. An offset greater than 50' will result in a 25% performance decrease. Using larger pressure and suction pipes will compensate for long offsets. Consult the factory for recommendations.

SYSTEM DIMENSIONS

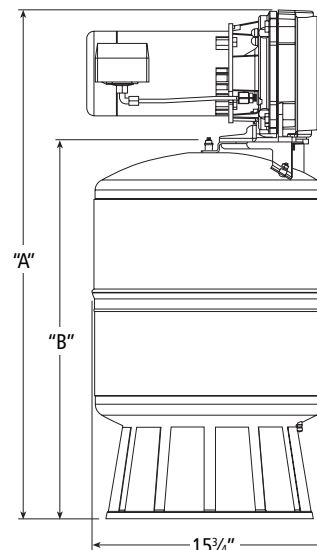
Model	Tank	Tank Wt. (lb.)	Total Wt. (lb.)
J05X	V15P	11.9	63

Features Top Discharge only.



Model	A (in.)	B (in.)	Tank	Tank Wt. (lb.)	Total Wt. (lb.)
J05K	34.2	25.5	V45MP	27.8	71.0
J05L	41.7	33.0	V60MP	40.0	83.0

Features Dual Discharge.



Goolds Pumps

